

NSW CUSTODY STATISTICS

March 2023



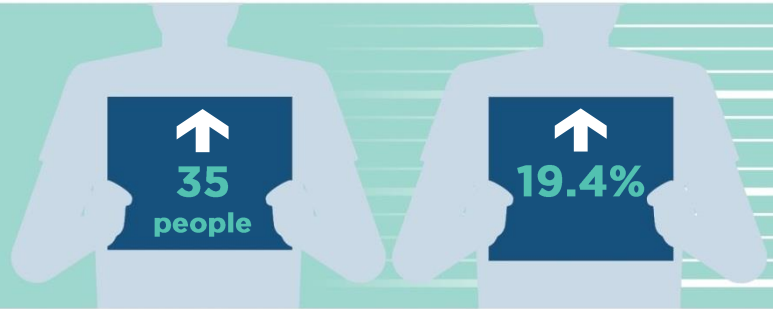
YOUTH DETENTION POPULATION

180

in March 2022

215

in March 2023



CUSTODY STATUS

Between March 2022 and March 2023



8.6%

Remand population increased 8.6% or 12 young people to 151



56.1%

Sentenced population increased 56.1% or 23 young people to 64

GENDER

Between March 2022 and March 2023



30.0%

Young female detainees increased 30.0% or 3 young people to 13



18.8%

Young male detainees increased 18.8% or 32 young people to 202

ABORIGINAL OVER-REPRESENTATION

In Mar 2022

52.8%

of young people in custody were Aboriginal

In Mar 2023

56.7%

of young people in custody were Aboriginal

Between March 2022 and March 2023



50.0%

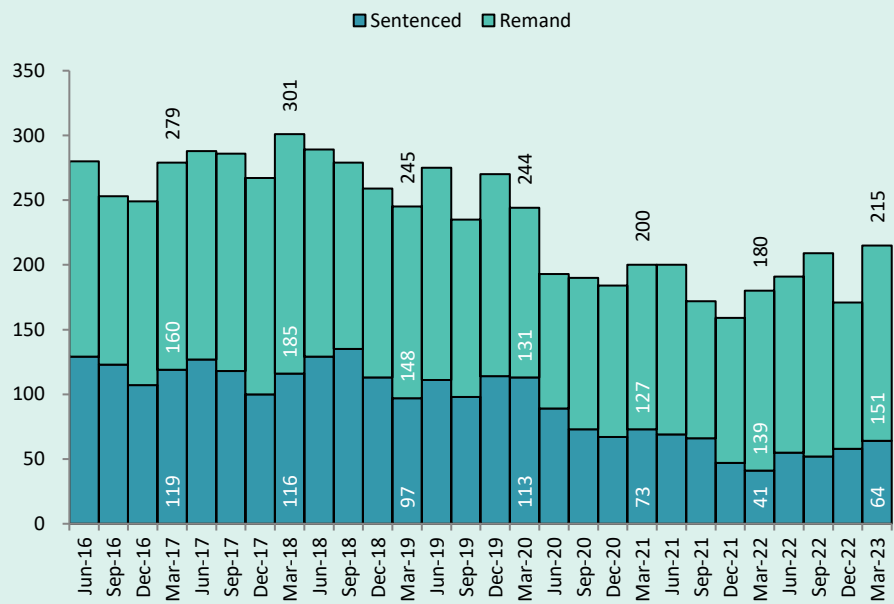
Young Aboriginal female detainees increased 50.0% or 3 young people to 9



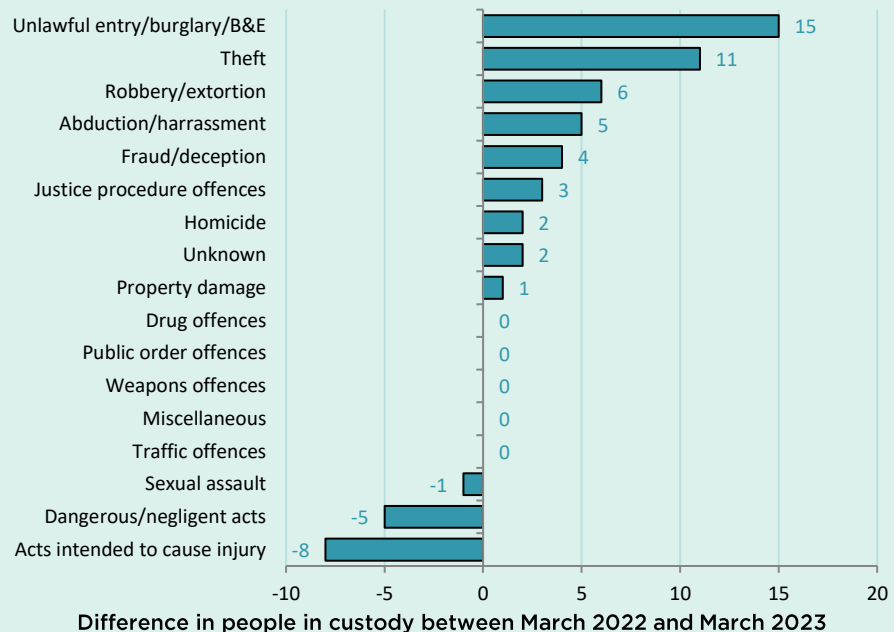
27.0%

Young Aboriginal male detainees increased 27.0% or 24 young people to 113

QUARTERLY TRENDS



CHANGE IN YOUTH CUSTODY BY OFFENCE



NSW CUSTODY STATISTICS

March 2023

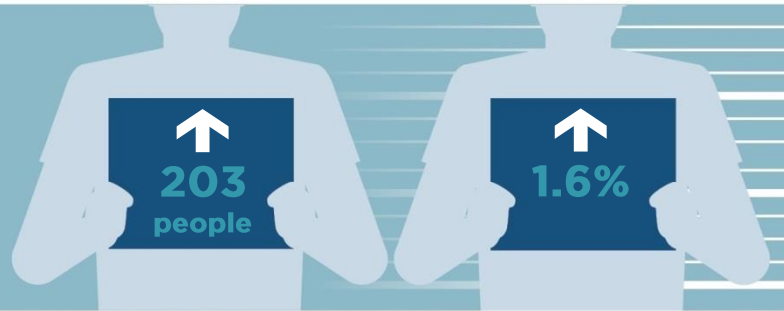
PRISON POPULATION

12,352

in March 2022

12,555

in March 2023



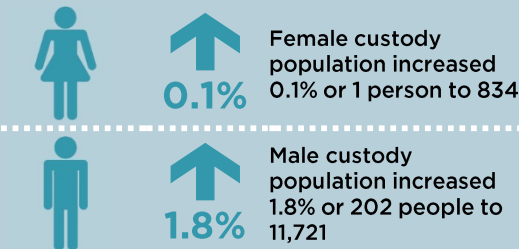
LEGAL STATUS

Between March 2022 and March 2023

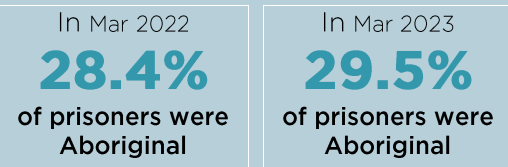


GENDER

Between March 2022 and March 2023



ABORIGINAL OVER-REPRESENTATION*

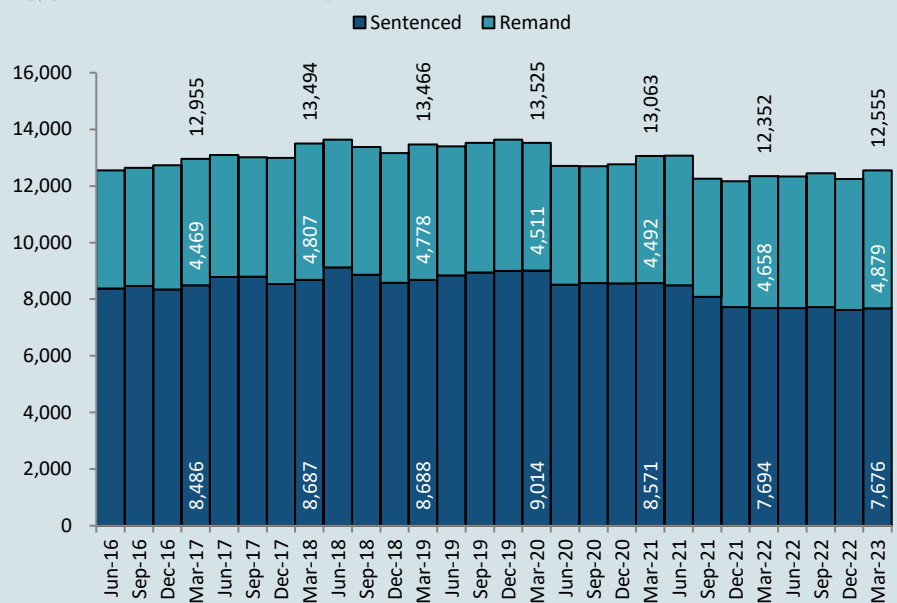


Between March 2022 and March 2023

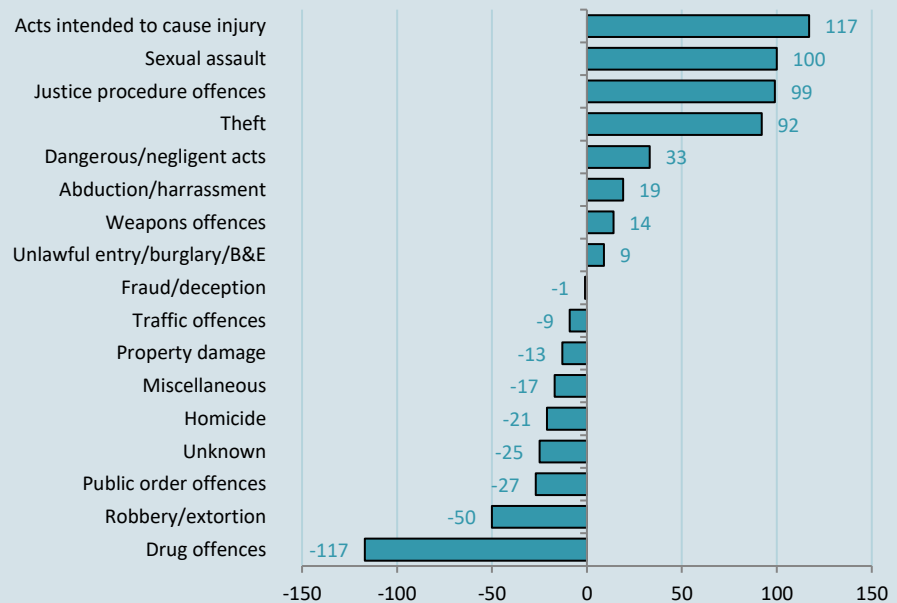


*Due to delays in identification of Aboriginal status the number of Aboriginal persons in adult custody is potentially undercounted by up to 2% in more recent months.

QUARTERLY TRENDS



CHANGE IN PRISON NUMBERS BY OFFENCE



Difference in people in custody between March 2022 and March 2023